

What it is

School performance data, helping governors to hold schools to account, support and challenge the leadership team and make more informed strategic decisions.

The Governor Dashboard is one of a series of dashboards in FFT Aspire – simple-to-use reports for school leaders, teachers and governors. They support rigorous self-evaluation, inspection preparation and in-depth planning.

What it tells you

How does attainment and pupil progress at your school compare to the national average?

How are you performing in different subjects?

Do you have any under-performing groups of pupils?

How might the context of your school affect performance?

How does pupil attendance compare to the national average?

What are the strengths and weaknesses of your school?

Full interactive dashboards & help at fftaspire.org

About the data shown

1 2 3

Actual results

Actual results for your school, using a range of measures such as averages and thresholds.



Gauges

These display headline indicators and whether actual results and pupils' progress are in line with, or significantly above or below, the national average.

Small cohorts

For small pupil cohorts we will suppress the data with an asterisk (*). Where it is not possible to calculate a figure or if data is not available this will be shown by a dash (-).

ESTIMATED



1 2 3

Pupil progress

The value added progress that your pupils have made from one key stage to the next. FFT compares your actual results to the estimated results based on the progress of similar pupils nationally.



Statistical significance

Green plus signs and red minus signs highlight where either actual results or pupils' progress is significantly above or below the national average.

Data sources

Generated from FFT Aspire which includes data sourced from the DFE (National Pupil Database) and data calculated by FFT. The headline performance indicators will be consistent with RAISEonline and the DFE School Performance tables.



Trends

The dashboard analyses school performance over 3-5 years. Any significant year-on-year improvement is highlighted using an up arrow. Significant declines in performance are highlighted with a down arrow.



Strengths & weaknesses

These highlight key pupil groups and subjects where progress is above or below the national average.

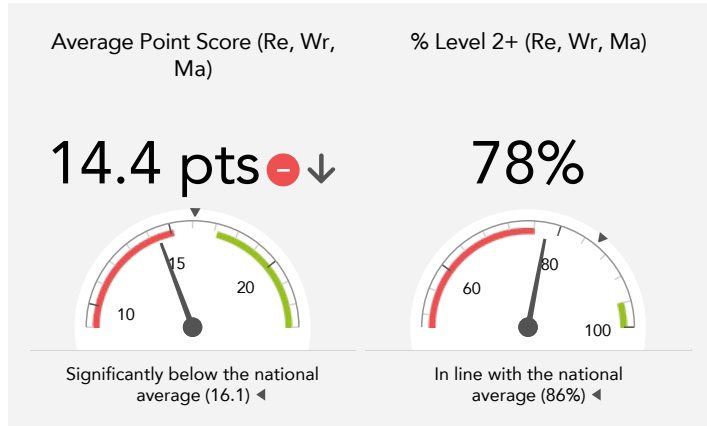
Working in partnership with



Overview

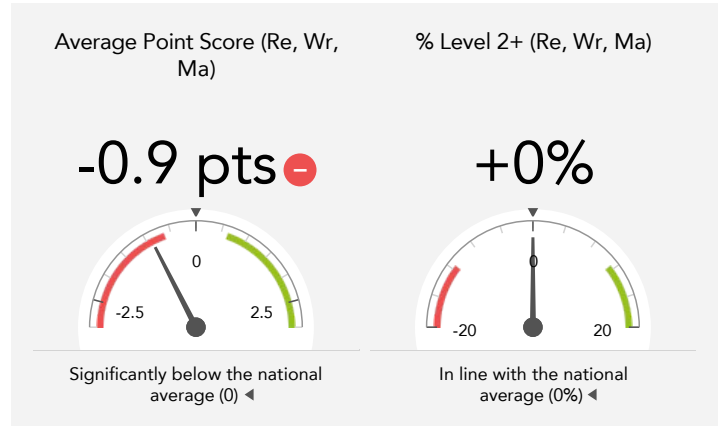
KS1 Attainment 2015 · Actual results

49 pupils



KS1 Progress 2015 · Value Added

40 matched pupils



KS1 higher and lower performing pupil groups 2015

	Higher performing	Lower performing
<p>Overall achievement pupil progress</p>		<p>White (11) -</p> <p>FSM (12) -</p> <p>Higher attainers (12)</p>
<p>KS1 reading achievement pupil progress</p>		<p>White (11) -</p> <p>Middle attainers (12) -</p> <p>SEN Support (17) -</p>
<p>KS1 writing achievement pupil progress</p>		<p>Higher attainers (12)</p> <p>FSM (12)</p> <p>White (11)</p>
<p>KS1 mathematics achievement pupil progress</p>		<p>FSM (12)</p> <p>Black Caribbean (5)</p> <p>White (11)</p>

Using FFT Aspire dashboards



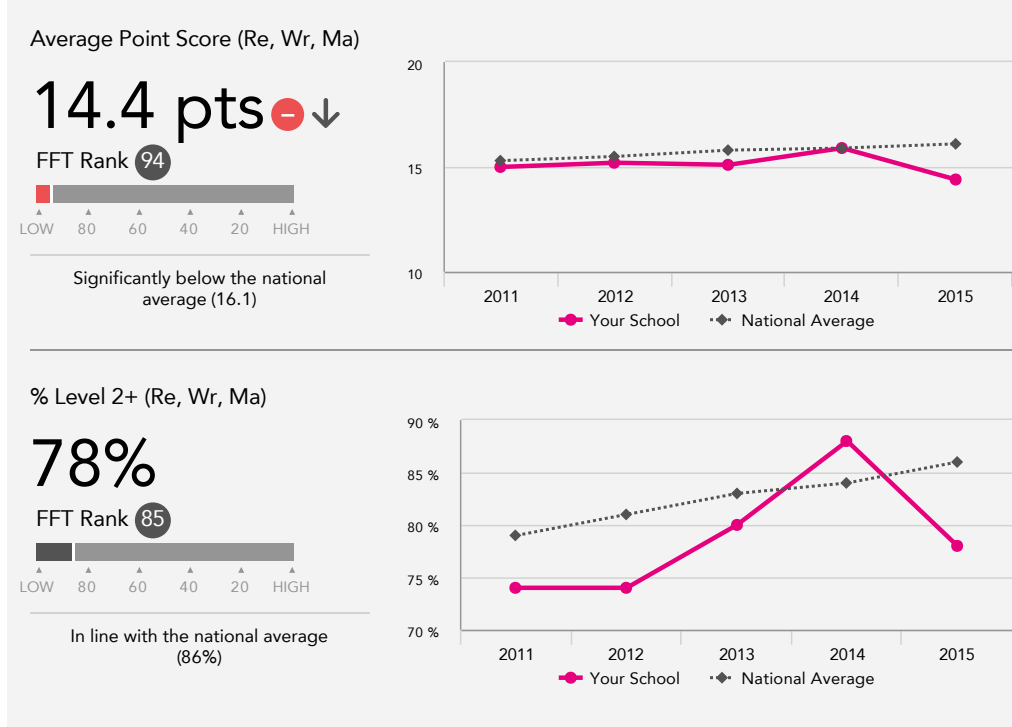
The dashboard provides an overview of performance in your school based on your actual results (**attainment**) and the value added pupil progress that pupils have made from one key stage to the next (**progress**).

The dashboard also provides a simple comparison of school performance against national averages. For value added progress measures, this comparison is based on the average progress made by similar pupils across the country. By 'similar pupils' we mean pupils with similar prior attainment, gender and month of birth.

Attainment & progress

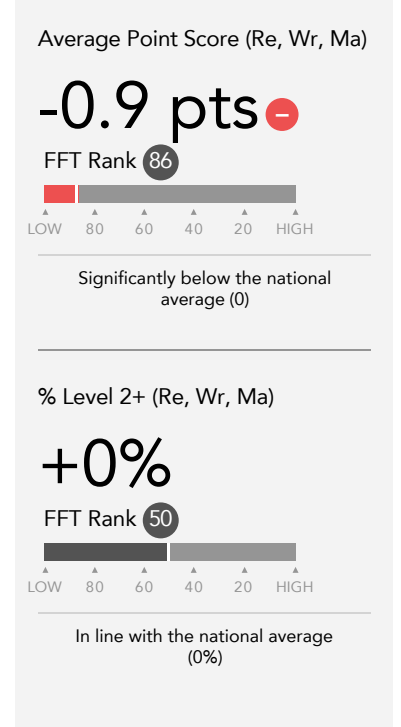
KS1 Attainment 2015

49 pupils



KS1 Progress 2015

40 matched pupils



KS1 performance summary

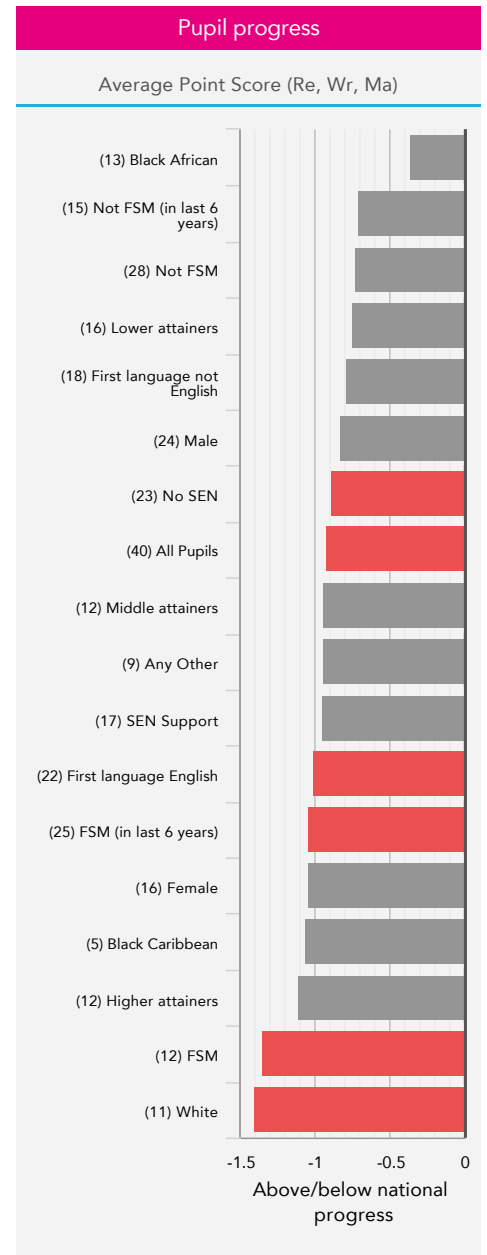
	Actual results			Pupil progress		
	2013	2014	2015	2013	2014	2015
Number of Pupils / % Matched	30	56	49	97%	93%	82%
Average level (Re, Wr, Ma)	2B	2B	2B - ↓	-0.1	-0.1 -	-0.2 -
Average Point Score (Re, Wr, Ma)	15.1	15.9	14.4 - ↓	-0.5	-0.6 -	-0.9 -
% Level 2+ (Re, Wr, Ma)	80%	88%	78%	-5%	+2%	+0%
% Level 2B+ (Re, Wr, Ma)	63%	66%	45% - ↓	+1%	-4%	-16% -
% Level 3+ (Re, Wr, Ma)	13%	14%	2% -	+4%	-2%	-10%
Average Point Score Reading	15.5	15.8	14.3 - ↓	-0.6	-1.1 -	-1.3 -
% Level 2+ Reading	87%	89%	80%	-4%	-2%	-3%
% Level 3+ Reading	23%	20%	12% -	-1%	-17% -	-14%
Average Point Score Writing	14.9	15.1	13.9 -	+0.1	-0.6	-0.7
% Level 2+ Writing	87%	88%	82%	+0%	+1%	+1%
% Level 3+ Writing	13%	14%	2% -	+1%	-6%	-14% -
Average Point Score Maths	14.8	16.6	15.0 - ↓	-1.0 -	-0.2	-0.8 -
% Level 2+ Maths	83%	93%	88%	-9%	+0%	-0%
% Level 3+ Maths	20%	34%	12% - ↓	+1%	+6%	-12% - ↓

Pupil groups

KS1 Pupil groups performance 2015

		Pupils	Actual results			Pupil progress		
			Average Point Score (Re, Wr, Ma)	% Level 2+ (Re, Wr, Ma)	% Level 3+ (Re, Wr, Ma)	Average Point Score (Re, Wr, Ma)	% Level 2+ (Re, Wr, Ma)	% Level 3+ (Re, Wr, Ma)
Summary	All Pupils	49	14.4 ⬇️	78%	2% ⬇️	-0.9 ⬇️	+0%	-10%
Gender	Male	29	14.3	72%	0%	-0.8	-0%	-11%
	Female	20	14.6 ⬇️	85%	5%	-1.0	+1%	-9%
Prior Attainment	Higher attainers	12	17.4	100%	8%	-1.1	+1%	-26%
	Middle attainers	12	15.3	100%	0%	-0.9	+5%	-7%
	Lower attainers	16	12.7	63%	0%	-0.8	-4%	-1%
Pupil Premium	FSM (in last 6 years)	25	14.8	88%	0%	-1.0 ⬇️	+3%	-12%
	Not FSM (in last 6 years)	22	14.1 ⬇️	68%	5%	-0.7	-4%	-8%
FSM	FSM	12	14.2	75%	0%	-1.4 ⬇️	-9%	-10%
	Not FSM	35	14.5 ⬇️	80%	3% ⬇️	-0.7	+4%	-10%
SEN Group	SEN Support	19	12.8	63%	0%	-1.0	-6%	-2%
	No SEN	28	15.6 ⬇️	89%	4%	-0.9 ⬇️	+5%	-16%
EAL	First language not English	23	13.6 ⬇️	74%	0%	-0.8	+3%	-7%
	First language English	24	15.2	83%	4%	-1.0 ⬇️	-2%	-13%
Ethnicity	White	14	13.5 ⬇️	57%	7%	-1.4 ⬇️	-13%	-5%
	Black Caribbean	5	15.8	80%	0%	-1.1	-9%	-25%
	Black African	13	15.5	92%	0%	-0.4	+7%	-10%
	Pakistani	*	*	*	*	*	*	*
	Other Asian	*	*	*	*	*	*	*
	Any Other	12	13.8 ⬇️	83%	0%	-0.9	+12%	-8%
	No Ethnicity Data	*	*	*	*	*	*	*

KS1 Progress 2015



Subjects

KS1 subject performance 2015

	Actual results			Pupil progress			Actual results over time
	2013	2014	2015	2013	2014	2015	
Number of Pupils / % Matched	30	56	49	97%	93%	82%	
Reading							
% Level 2+	87%	89%	80%	-4%	-2%	-3%	
% Level 2B+	70%	75%	55% ⬇	-10%	-7%	-18% ⬇	
% Level 3+	23%	20%	12% ⬇	-1%	-17% ⬇	-14%	
Average level	2B	2B	2B ⬇	-0.1	-0.2 ⬇	-0.2 ⬇	
Average Point Score	15.5	15.8	14.3 ⬇	-0.6	-1.1 ⬇	-1.3 ⬇	
Writing							
% Level 2+	87%	88%	82%	+0%	+1%	+1%	
% Level 2B+	67%	66%	51% ⬇	+1%	-7%	-12% ⬇	
% Level 3+	13%	14%	2% ⬇	+1%	-6%	-14% ⬇	
Average level	2B	2B	2C ⬇	+0.0	-0.1	-0.1	
Average Point Score	14.9	15.1	13.9 ⬇	+0.1	-0.6	-0.7	
Maths							
% Level 2+	83%	93%	88%	-9%	+0%	-0%	
% Level 2B+	63%	80%	65% ⬇	-15%	-4%	-5%	
% Level 3+	20%	34%	12% ⬇	+1%	+6%	-12% ⬇	
Average level	2B	2A	2B ⬇	-0.2 ⬇	-0.0	-0.1 ⬇	
Average Point Score	14.8	16.6	15.0 ⬇	-1.0 ⬇	-0.2	-0.8 ⬇	
Speaking and Listening							
% Level 2+	83%	86%	80%	-7%	-3%	-2%	
% Level 3+	17%	18%	0% ⬇	-2%	-11%	-23% ⬇	
Average level	2	2	2 ⬇	-0.1 ⬇	-0.1 ⬇	-0.2 ⬇	
Average Point Score	14.8	15.3	13.8 ⬇	-0.6 ⬇	-0.7 ⬇	-1.2 ⬇	
Science							
% Level 2+	83%	84%	82%	-8%	-8%	-4%	
% Level 3+	13%	16%	0% ⬇	-6%	-12%	-22% ⬇	
Average level	2	2	2 ⬇	-0.1	-0.1 ⬇	-0.2 ⬇	
Average Point Score	14.6	15.1	13.9 ⬇	-0.7	-0.9 ⬇	-1.1 ⬇	

Context

Context · Year 2 · 2014 / 2015

		Pupils	Proportion	
			School	National
Summary	All Pupils	47	100%	100%
Gender	Male	27	57%	51%
	Female	20	43%	49%
Prior Attainment	Higher attainers	12	26%	35%
	Middle attainers	12	26%	33%
	Lower attainers	16	34%	29%
Pupil Premium	FSM (in last 6 years)	25	53%	25%
	Not FSM (in last 6 years)	22	47%	75%
FSM	FSM	12	26%	17%
	Not FSM	35	74%	83%
SEN Group	SEN Support	19	40%	14%
	No SEN	28	60%	84%
EAL	First language not English	23	49%	20%
	First language English	24	51%	80%
Ethnicity	White	14	30%	75%
	Black Caribbean	5	11%	3%
	Black African	13	28%	5%
	Pakistani	*	*	*
	Other Asian	*	*	*
	Any Other	12	26%	4%
	No Ethnicity Data	*	*	*

Absence · Year 2 · Autumn 2014 & Spring 2015

		Pupils	Absence		Persistent absentees	
			School	National	School	National
Summary	All Pupils	47	6%	5%	6%	3%
Gender	Male	27	6%	5%	11%	3%
	Female	20	5%	5%	0%	3%
Prior Attainment	Higher attainers	12	4%	4%	8%	1%
	Middle attainers	12	5%	5%	0%	2%
	Lower attainers	16	7%	6%	13%	5%
Pupil Premium	FSM (in last 6 years)	25	6%	6%	12%	6%
	Not FSM (in last 6 years)	22	5%	4%	0%	1%
FSM	FSM	12	7%	7%	17%	8%
	Not FSM	35	5%	4%	3%	2%
SEN Group	SEN Support	19	6%	6%	5%	6%
	No SEN	28	5%	4%	7%	2%
EAL	First language not English	23	5%	6%	0%	3%
	First language English	24	6%	5%	13%	3%
Ethnicity	White	14	6%	5%	7%	3%
	Black Caribbean	5	8%	5%	20%	5%
	Black African	13	4%	4%	8%	2%
	Pakistani	*	*	*	*	*
	Other Asian	*	*	*	*	*
	Any Other	12	6%	5%	0%	3%
	No Ethnicity Data	*	*	*	*	*